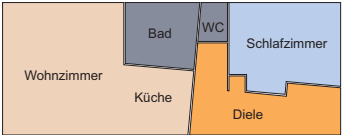
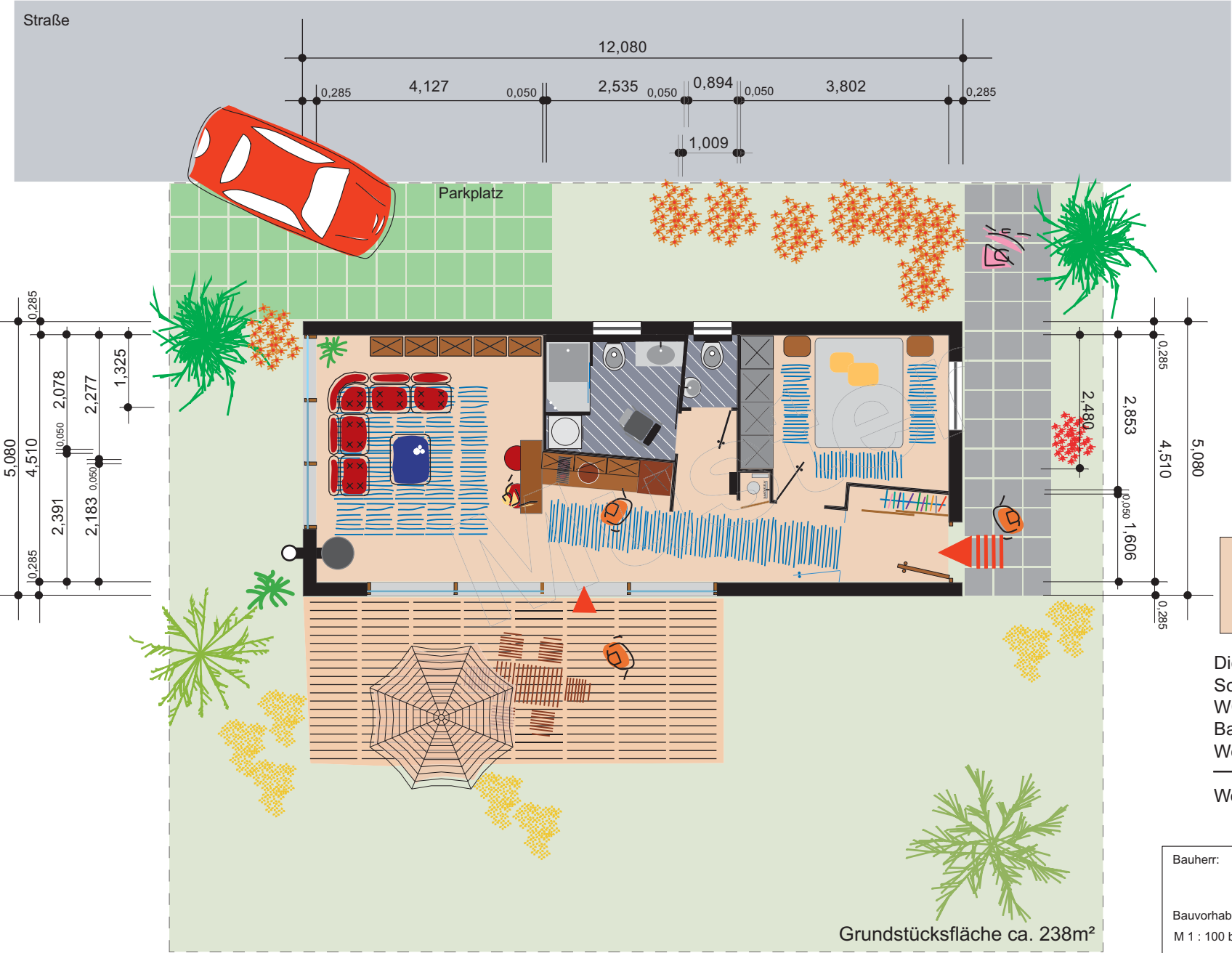
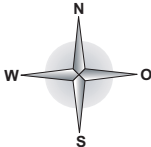


Grundriss EG



Diele	9,85 m <sup>2</sup>
Schlafzimmer	10,75 m <sup>2</sup>
WC	1,25 m <sup>2</sup>
Bad	5,30 m <sup>2</sup>
Wohnzimmer-Küche	23,85 m <sup>2</sup>
<b>Wohnfläche</b>	<b>51,00 m<sup>2</sup></b>

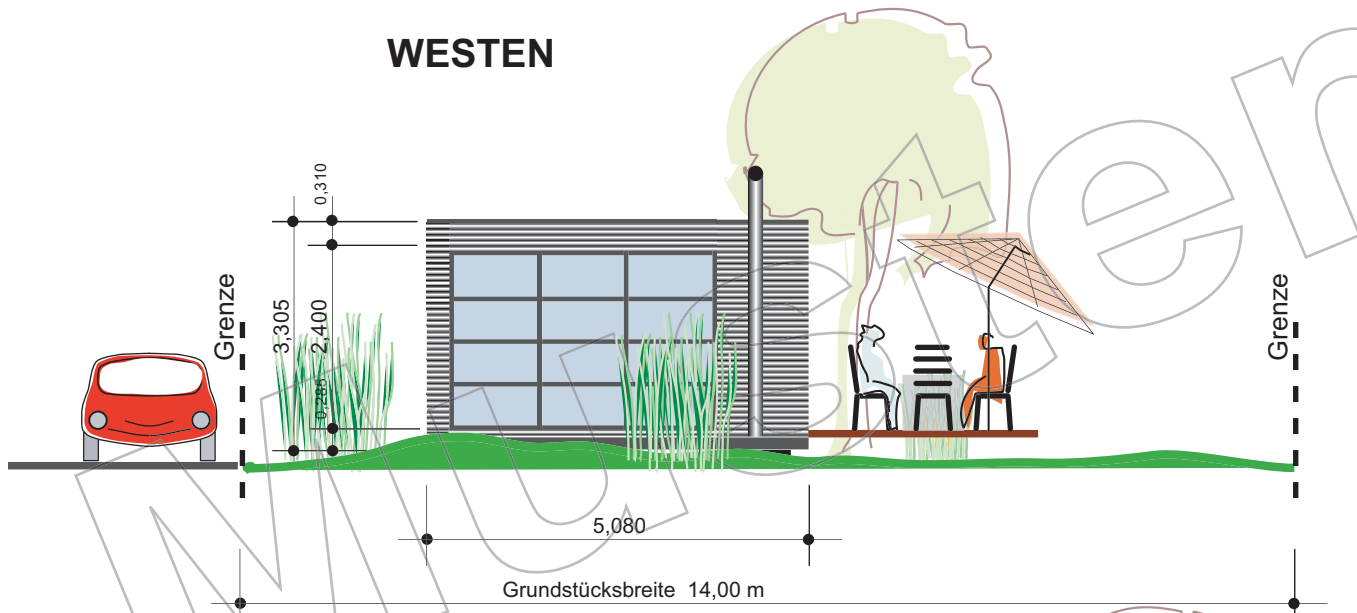
Bauherr:

Bauvorhaben: Modul1-02 Wohnhaus  
M 1 : 100 bei A4

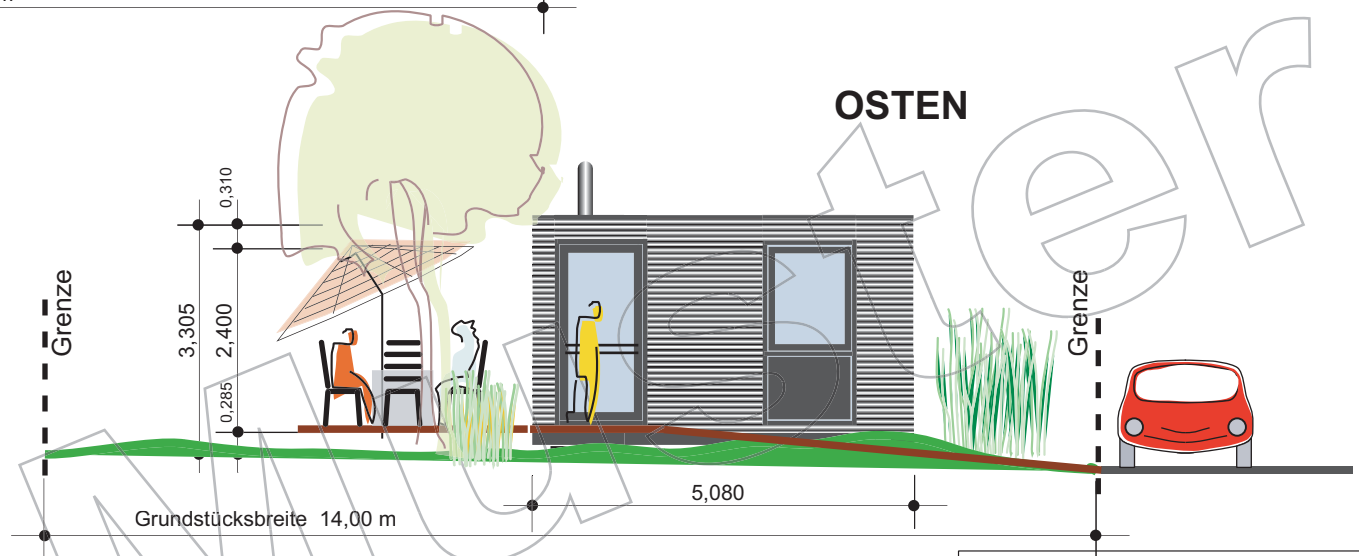
Gefertigt: ..., ..., 2009

Copyright by KRAUSS GMBH DEUTSCHLAND  
Copyright by KRAUSS INNOVATION LTD CANADA

## WESTEN

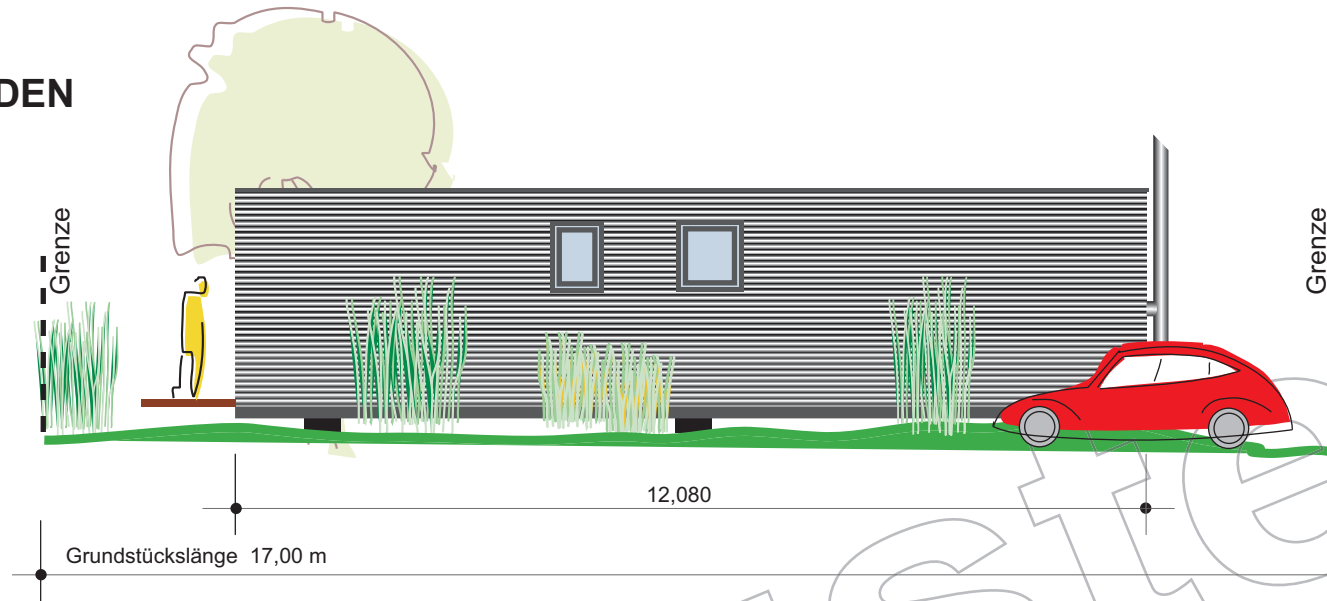


## OSTEN

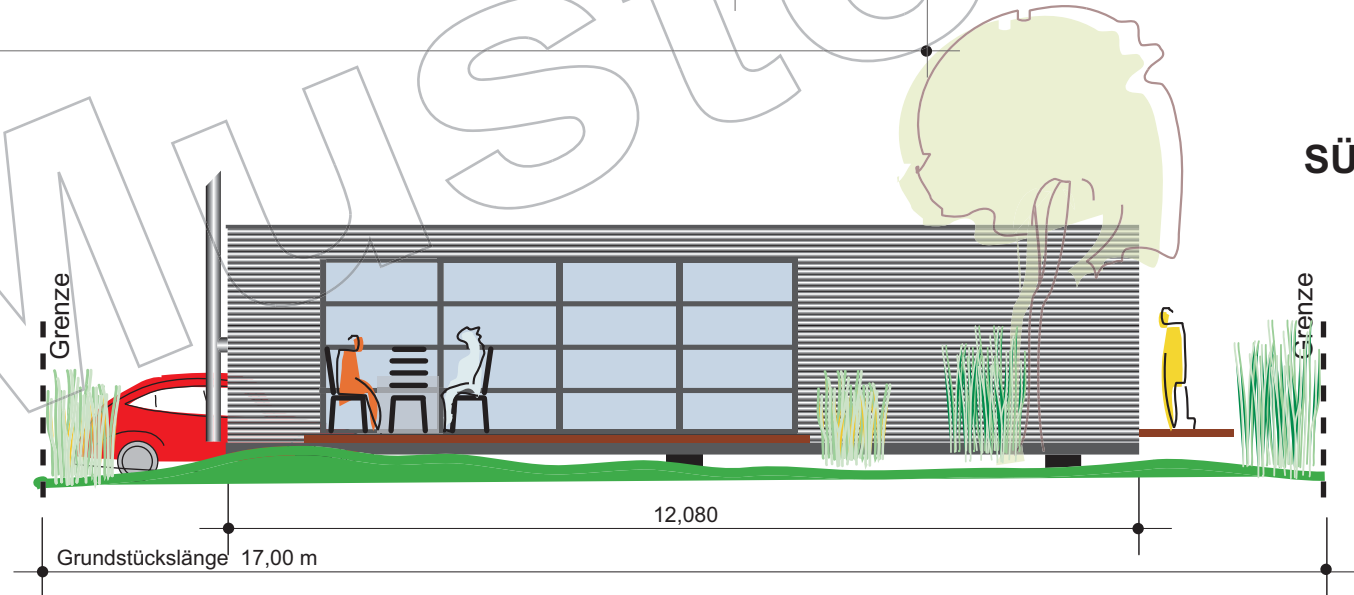


Bauherr:
Bauvorhaben: Modul1-02 Wohnhaus M 1 : 100 bei A4
Gefertigt: ..., ..., 2009
Copyright by KRAUSS GMBH DEUTSCHLAND Copyright by KRAUSS INNOVATION LTD CANADA

NORDEN



SÜDEN



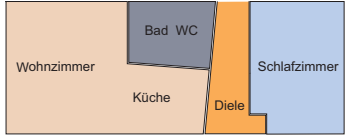
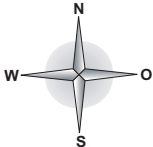
Bauherr:

Bauvorhaben: Modul1-02 Wohnhaus  
M 1 : 100 bei A4

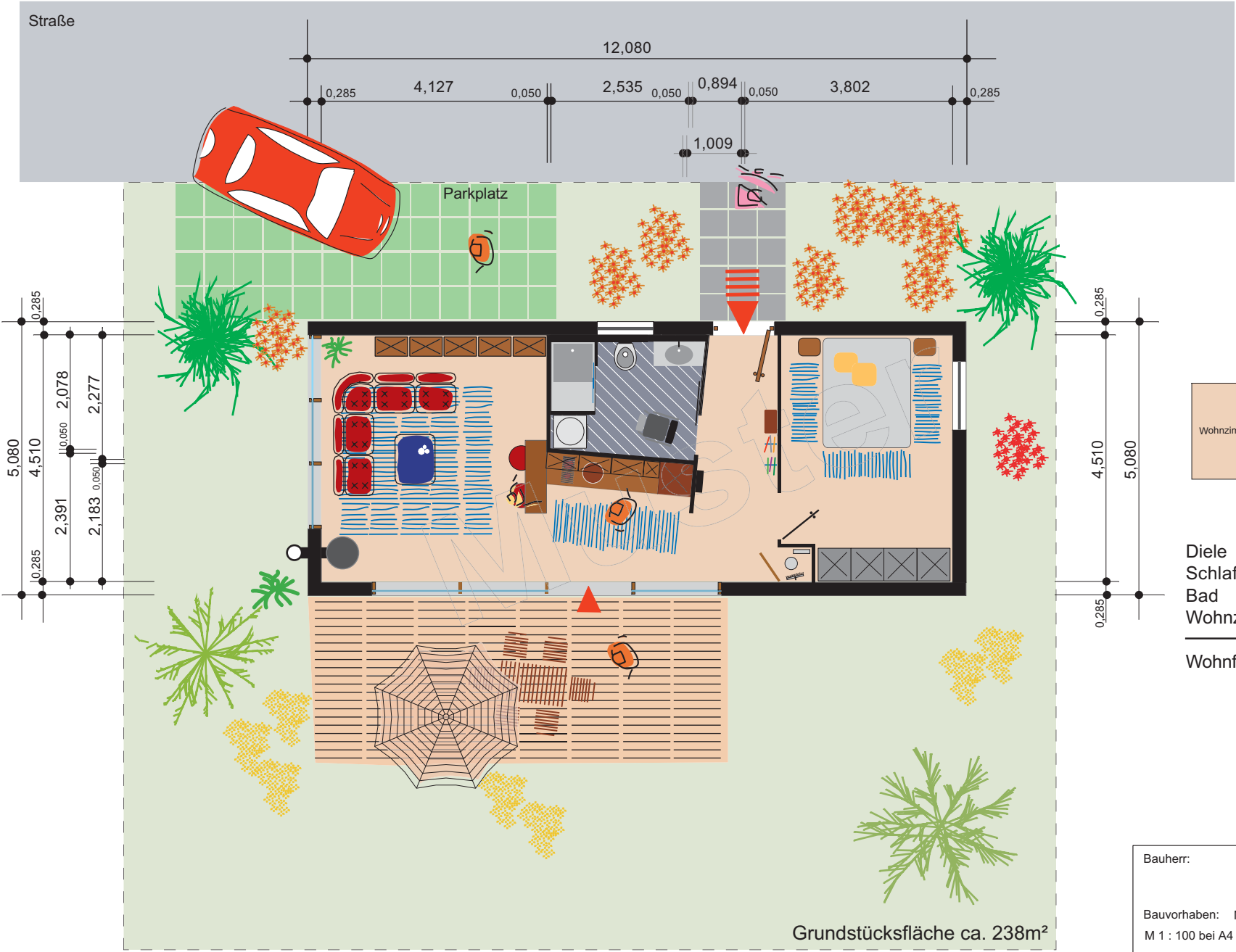
Gefertigt: ..., ..., 2009

Copyright by KRAUSS GMBH DEUTSCHLAND  
Copyright by KRAUSS INNOVATION LTD CANADA

Grundriss EG



Diele	7,00 m <sup>2</sup>
Schlafzimmer	13,60 m <sup>2</sup>
Bad	5,90 m <sup>2</sup>
Wohnzimmer-Küche	24,50 m <sup>2</sup>
<b>Wohnfläche</b>	<b>51,00 m<sup>2</sup></b>



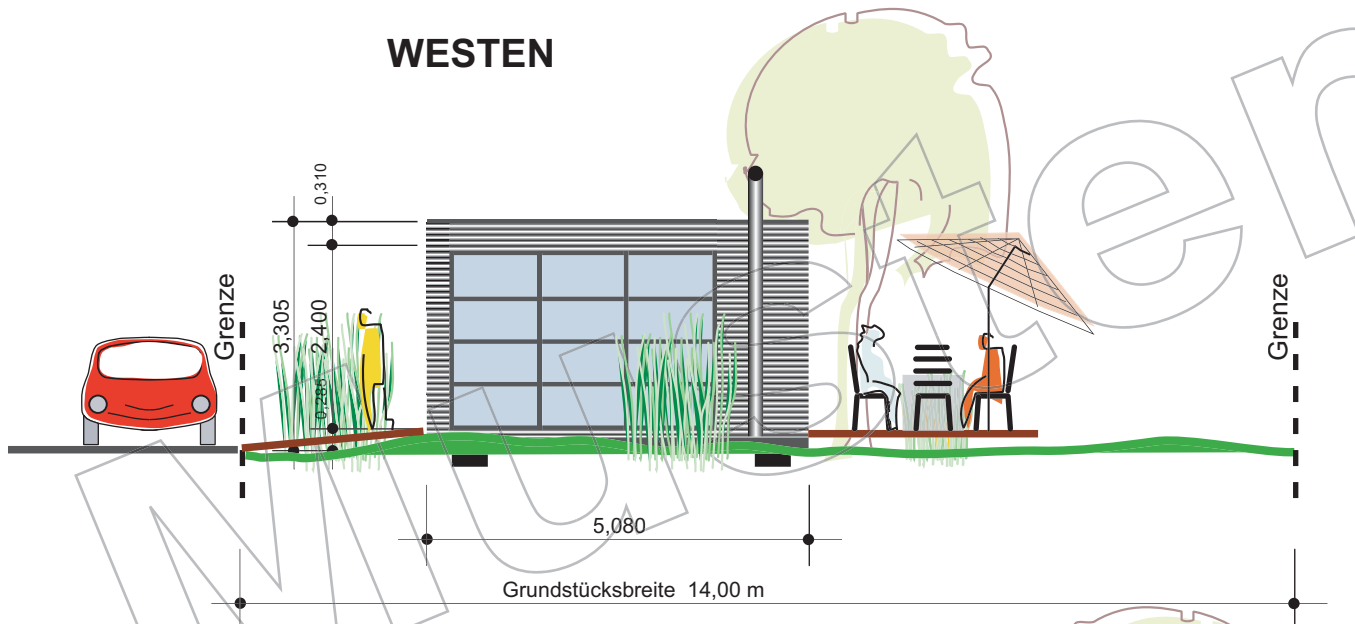
Bauherr:

Bauvorhaben: Modul1-03 Wohnhaus  
M 1 : 100 bei A4

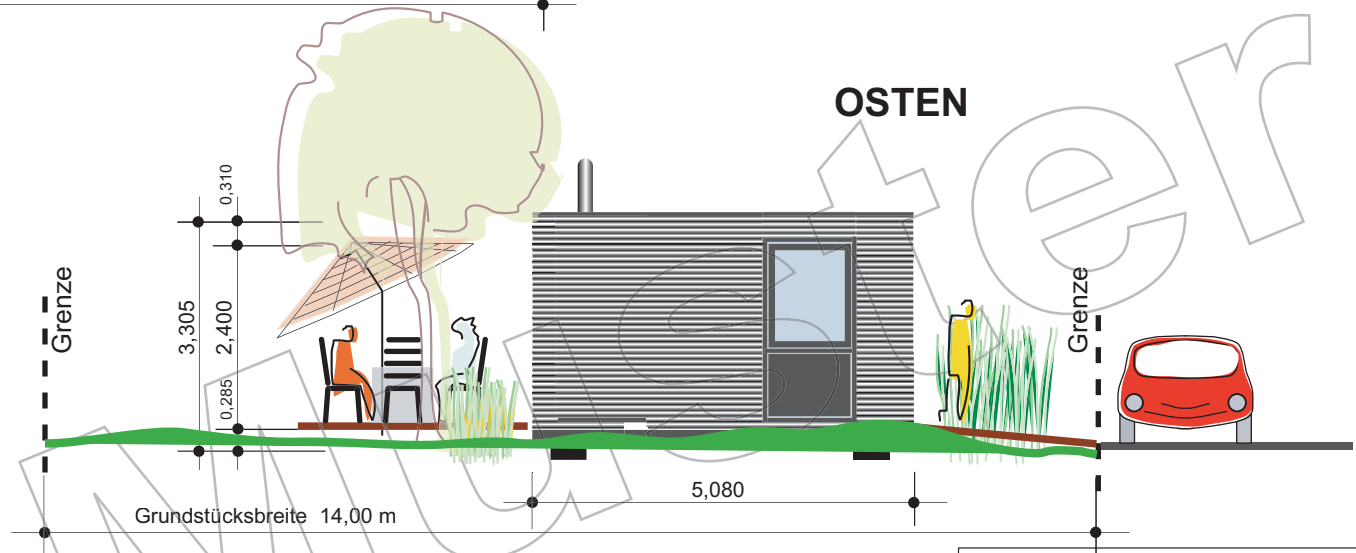
Gefertigt: ..., ..., 2009

Copyright by KRAUSS GMBH DEUTSCHLAND  
Copyright by KRAUSS INNOVATION LTD CANADA

## WESTEN

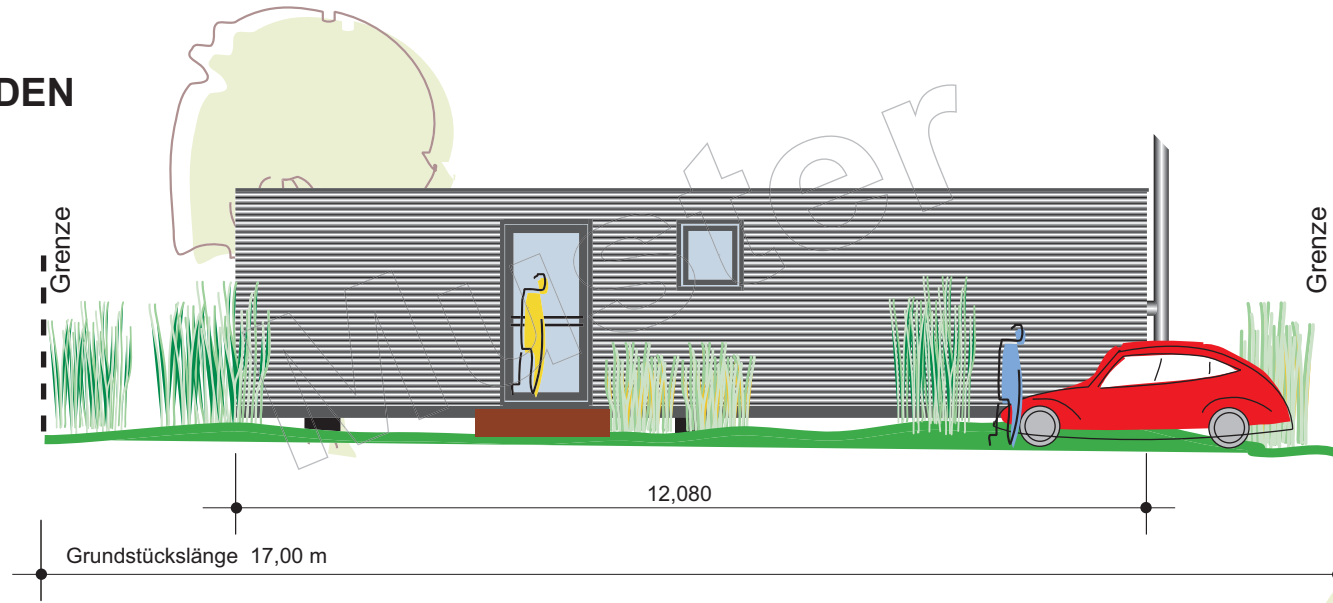


## OSTEN

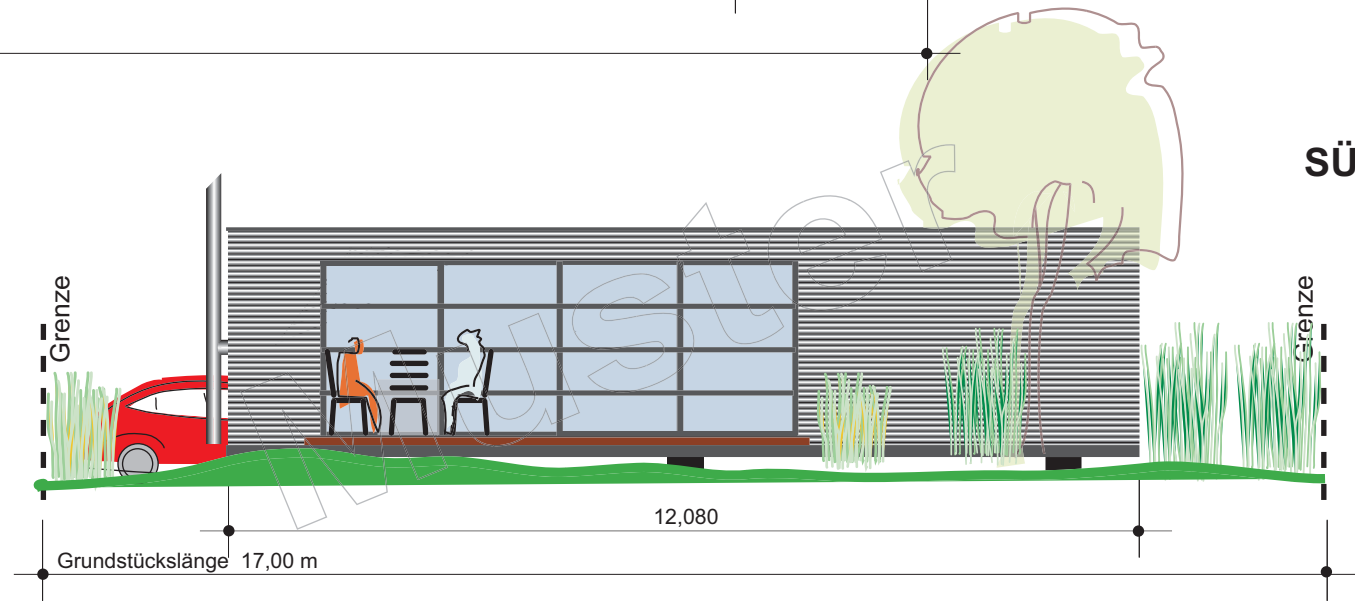


Bauherr:
Bauvorhaben: Modul1-03 Wohnhaus M 1 : 100 bei A4
Gefertigt: ..., ..., 2009
Copyright by KRAUSS GMBH DEUTSCHLAND Copyright by KRAUSS INNOVATION LTD CANADA

# NORDEN



# SÜDEN



Bauherr:
Bauvorhaben: Modul1-03 Wohnhaus M 1 : 100 bei A4
Gefertigt: ..., ..., 2009
Copyright by KRAUSS GMBH DEUTSCHLAND Copyright by KRAUSS INNOVATION LTD CANADA